

# APAG02-2

## 802.11b/g Outdoor Booster



### Description:

Designed for extending the range of 2.4 GHz wireless radio devices, the booster amplifier is particularly effective when used with Direct Sequence or Frequency Hopping Spread Spectrum radio modems. The unit provides the transmit power gain as well as receive signal gain.

Proprietary in-house MMIC design allows sensing of input power condition and protects itself against over power or reverse power operating conditions.

Amplifier enclosure is built of light weight aluminum. Together with the water proof feature, the unit is designed to be mounted right behind the antenna for outdoor applications. DC-injector module together with the 7.5V DC adaptor provides DC power to the booster amplifier thru the RF coaxial cable.

### Features:

Works with Access Points & Routers

Increases Signal Coverage Distance

Increases Throughput

Quick & Easy Installation

Immediate Results

No Programming Required

Complete with Power Supply

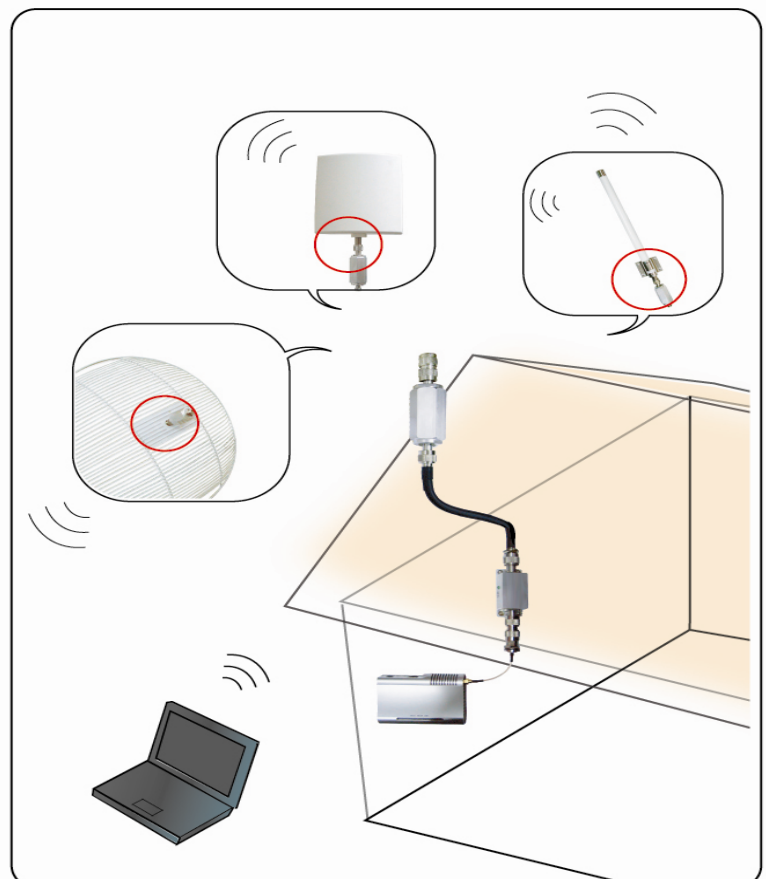
### Applications:

Wireless Hot Spots

WLAN, 802.11b/g

Bluetooth

Bridge Link Between Networks



## Specifications

Parameter	Min.	Typ.	Max.	Units	Notes
Frequency Range	2400		2500	MHz	
P1dB		33		dBm	
Linear Pout		27		dBm	@ 5.5% EVM & 802.11g / 54 Mbps
Tx Mode Turn on Power	5			dBm	
Tx Gain		15		dB	
Rx Gain		12		dB	
Rx Noise Figure		3.5		dB	
VSWR, Input/Output			2:1		
Tx Current		1400		mA	@ 5.5% EVM Power
Rx Current		100		mA	
DC Supply	9	-	15	V	
Operating Temperature	-40		+70	°C	

### Mechanical Specifications

Dimension: Amplifier 3.07" X 1.38"  
 DC Injector 1.4" X 3.7" X 1.2"

Connectors: Amplifier  
                   Input N(F)  
                   Output N(M)  
 DC Injector  
                   Input N(M)  
                   Output N(M)

Weight: Amplifier 310 gram  
 DC Injector 148 gram

Weather Proof IP67 Rating